

Stop the spread

Practice good hygiene



Wash your hands regularly
Spend 20 seconds washing with soap and water or use hand sanitiser



Cover your nose and mouth
Cough and sneeze into your elbow



Avoid close contact
Keep your distance from those with cold or flu-like symptoms



Stay home if you are sick



MARCH 2020

COUNCIL NEWSLETTER

COVID-19 - What it Means For Coolamon Shire

Please be advised that our response and information that Coolamon Shire Council provides on the COVID-19 pandemic is designed to be informative and measured.



Council is aware that information should weigh up the need to protect individuals from infection but also ensure essential services, business and communities can still operate on a viable level.

The information provided at the moment is extensive and can overload individuals. The appropriate bodies that Council will gather information from are the primary source, such as the relevant departments of both Federal and State Governments.


The nature of this pandemic is fluid and changing fast, therefore we will endeavor to provide the appropriate information as it applies to Coolamon Shire Council as the circumstances warrant or demand.


COVID-19 - Where to find out more information

Council will be updating their information when it comes to hand via the following networks;

 Council Website – News “COVID-19, What it means for Coolamon Shire” 

NSW Government Health Website; www.health.nsw.gov.au

 COVID-19 telephone hotline; 1800 020 080

 Facebook sites for– Coolamon Shire Council, Allawah Lodge, Coolamon Shire Library, Coolamon Early Childhood, Ardlethan Preschool and Visit Coolamon Shire.

MAYORAL STATEMENT

As more information comes to hand, Council is taking on board what it means to the community and its own operations.

With the number of cases in NSW and in particularly, the Murrumbidgee Local Health District on the rise, Council has followed the direction by the Prime Minister and the NSW Premier to close and restrict services to adhere with the social gathering protocols put in place. We want to encourage our community to adhere to the strict social distancing practices.

As previously identified, Allawah Lodge and Aged Care Services are our biggest risk groups and we continue to monitor based on the advice received and the health and safety of residents.

As of the, 27 March 2020, Allawah Lodge will not be allowing visitors into the facility. This has been put in place to protect the most vulnerable. We ask that families organise devices for their loved ones to enable contact with them and encourage non-physical contact communication. Please contact Allawah Lodge for more details on 6927 3477.

Allawah Community Care office will also be closed to the public, all communication can be done over the phone by contacting 69273 521 and if the matter cannot be answered over the phone, other arrangements can be made. Those who are receiving meals on wheels will be contacted to arrange for their meals to be delivered to their house. All other services will continue to be provided with the utmost care.

Council is striving to protect the community by the way we are engaging with them and this means moving towards non-physical contact where possible.

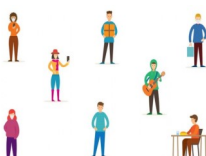
Currently, the Council office is closed to the public and staffing measures have been put in place to ensure longevity of service is provided. Please ring 69301800 if you require an essential appointment to be made with a staff member. Please embrace the alternative means of communication and staff are on hand to answer your enquires.

In adhering to the latest Government restrictions, the following areas have been closed until further notice; the Coolamon Shire Library, Community halls, Up-To-Date store, Visitor Information Centre, Museums and Caravan Parks

We firmly believe that if we all work together, as we have in the past, and confident that we will in the future, that our communities will survive this unprecedented time. If we all remain calm, act and think practically, we can minimise any impact.

Community Needs Your Help

Regularly wash your hands with soap for at least 20 seconds



Practice social distancing of at least 1.5m



Stronger Country Communities Fund Round Three

Earlier this month, Member for Cootamundra Steph Cooke MP announced \$768,762 from the NSW Government's Stronger Country Communities Fund to roll out nine projects, each of which will benefit communities across the shire.

- Skill Up! Getting Job Ready in the Coolamon Shire'
- Coolamon Shire Public Swimming Pool Development
- Coolamon and Matong Basketball Court Development
- Re-Store: Heritage Signage and Mural Trail
- Marrar War Memorial Hall Operable Wall Project
- Community Parks and Halls project
- Youth Event and Performance Kit
- Up-to-Date Store Youth Event Space
- Rejuvenation of Interior of the Ardlethan Memorial Hall .



Waste Collection Reminder

Council seeks to remind the community to be mindful of how much waste they place in their kerbside bins – especially their general waste bins (red top).

It follows on from some recent incidents of residents overfilling their waste and recycling bins.

If material is protruding from the bin or waste is tightly jammed in to the bin, this will result in the bin not being serviced/collected.

The bin lid must be closed and the contents must be able to be removed without manual intervention. When bin lids can't be closed you risk the waste spilling onto the road and/or attracting pests.



For more information regarding Council's Waste and Recycling services please visit Council's website (www.coolamon.nsw.gov.au) or contact Council's on 69301800)

Election and Community Survey



The Minister for Local Government has declared that the September 2020, Local Government Elections have been postponed for 12 months. Accordingly, the end of term community survey, which was set to take place at the end of March and early April 2020, has now been postponed. Council will inform the community of the new consultation dates when they are available.

Companion Animals

You are reminded that as the **owner** of a companion animal it is your responsibility to ensure that animals are restrained within your property and do not cause a nuisance to neighbours by way of wandering or barking .

When dogs wander, the likelihood of them becoming a nuisance or attacking people and other animals increases significantly, as does the chance of the dogs being declared as either menacing or dangerous. Fines for wandering dogs vary from \$220 to \$550.



Coolamon Shire Library

The Library is now closed to the public. In accordance with the current Federal Government Bans in place. This will mean services such as public computer use, Service NSW Kiosk, photocopying etc will no longer be available. Whilst this ban is in place we will be doing what we can to still provide some services to our community.

This will include;

- People wishing to return items are able to do so. Using a returns box that will be left at the front door of the library
- We will be offering a phone order pick up service. Phone us, email us, or Facebook message us with your requests and your items will be left to collect from the front door of the library

Whilst the library is closed, you are still able to access online services including apps for audio books, eBooks, eMagazines.

Visit www.rrl.nsw.gov.au/elibrary to download!

These measures will be put in place pending further announcements from the Government.

PHONE: 69272492

EMAIL: library@coolamon.nsw.gov.au

Please note that all scheduled visits from the Mobile Library are now cancelled.



The next Council Meeting will be held on Thursday, 16th April 2020, Commencing at 3:00pm.